



SWITCHGEAR



*Engineered Solutions for
Power Distribution*

Switchgear

In this brochure, we present a complete range of advanced, problem-solving switchgear products that have established Park as an industry leader in power distribution systems. Shown and described are medium voltage switchgear units for many diverse applications, all featuring the Park hallmarks of modern design and cutting-edge technology. With some of the industry's finest electrical engineers on staff, Park is ideally equipped to handle difficult custom jobs that many other companies may not have the capability to undertake.

Special projects are one of our particular strengths at Park, evidenced by our outstanding record for delivering these systems on tight schedules, and often under demanding circumstances.

Whatever your switchgear requirements, you can always rely on Park to provide you with the finest, state-of-the-art products and support services.



FEATURES & ADVANTAGES

- Interrupter switches are completely factory adjusted.
- No taping of bus connections
- Built-in access control eliminates expensive fencing
- Wide-view windows allow inspection of switches from outside
- Louvers and space heaters reduce moisture
- Spare fuses store in built-in racks
- Generous access and ample work space
- Hot dipped galvanized base
- Sturdy, lockable latches
- Welded construction for security and strength
- Heavy duty hinges
- Manufactured to applicable utility standards



Metal Enclosed

Metal Enclosed Load Interrupter Switchgear

Park Switchgear configurations are limited only by your imagination.

Each unit features welded steel construction with wideview windows that allow checking switchgear without opening doors. Corrosionproof, rainproof louvers at the bottom and top, and space heaters inside each unit maintain air circulation to keep the interior dry. Three point cam-type, high-strength latches seal the doors shut. The lockable latches and screened louvers discourage tampering. Wide bulkhead doors provide easy access to all bays. Each full-length door has durable heavy-duty hinges with brass pivots. Foot operated holders lock the doors open, providing ample room for pulling cables and making terminations.

All interrupter switches are maintenance-free and are available in 200, 600, and 1200 amp ratings. S&C® Power Fuses provide full-fault-spectrum protection. The switches are manually operated by nonremovable switch handles. Bus connections are silverplated copper for long life. Continuous ground bus in multibay lineups has a short-circuit rating equal to that of the integrated assembly. The HV meter bays are built to utility specifications and multibay lineups are assembled with a minimum of interbay bolting.

Call today and discuss your requirements with a Park sales representative.

UL® Listed up to 15KV

SPECIFICATIONS

Ratings of S&C Mini-Ruptor Switches

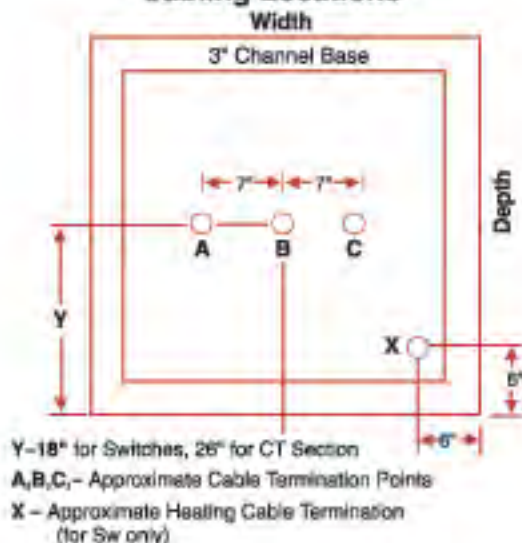
KV			Amperes, RMS					Mom. & Fault Close (ASYM KA)
Nom.	Max. Des.	BIL	Cont.	Interrupting				
				Load	Cap.	Mag.		
5	5.5	60	600	600	35	21	40	
5	5.5	60	1200	1200	35	21	61	
15	17	95	600	600	35	21	40	
15	17	95	1200	1200	35	21	61	
25	29	125	600	400	35	21	40	
34.5	38	150	600	600	35	21	28	

Physical Sizes & Park Numbers

Park No.	Voltage KV	Height	Depth	Width
PM 315-4.8	4.8	104"	44"	42"
PM 315-15	15	104"	44"	42"
PM 315-25	25	120"	44"	42"
PM 315-35	34.5	130"	70"	60"
PM 315-CT	PT/CT Bay	to match	to match	to match
PM 315-WM	Meter Bay	to match	to match	60"

To order specify current rating & fuse size.

Cabling Locations



Switchgear

FEATURES & ADVANTAGES

- Interrupter switches are completely factory adjusted
- Built-in access control eliminates expensive fencing
- Standard drilling and tapping for mounting various size and manufacturers' current and potential transformers
- No taping of bus connections
- Front operator standard
- Side operator available as an option
- Louvers and space heaters reduce moisture
- Spare fuses store in built in racks
- Sturdy 3 point door latch
- Heavy duty hinges
- Sturdy, lockable latches
- Welded construction for security and strength
- Hot dipped galvanized base
- Manufactured to applicable utility standards
- Finished with one prime and two enamel coats for corrosion resistance



Each unit features welded steel construction. Corrosionproof, rainproof louvers at the bottom and top, and space heaters inside each unit maintain air circulation to keep the interior dry. Three point cam-type, high-strength latches seal the doors shut. The lockable latches and screened louvers discourage tampering. Wide bulkhead doors provide easy access. Each full-length door has durable heavy-duty hinges with brass pivots. Foot operated holders lock the doors open and provides ample room for pulling cables and making terminations.

Interruptor switches are maintenance-free and are 600 amp rated. S&C® Power Fuses provide full-fault-spectrum protection. The switches are manually operated by removable switch handles. Bus connections are silverplated copper for long life. The HV meter bays are built to utility specifications.

Call today and discuss your requirements with a Park sales representative.

UL® Listed up to 15KV

SPECIFICATIONS

Ratings of S&C Mini-Ruptor Switches

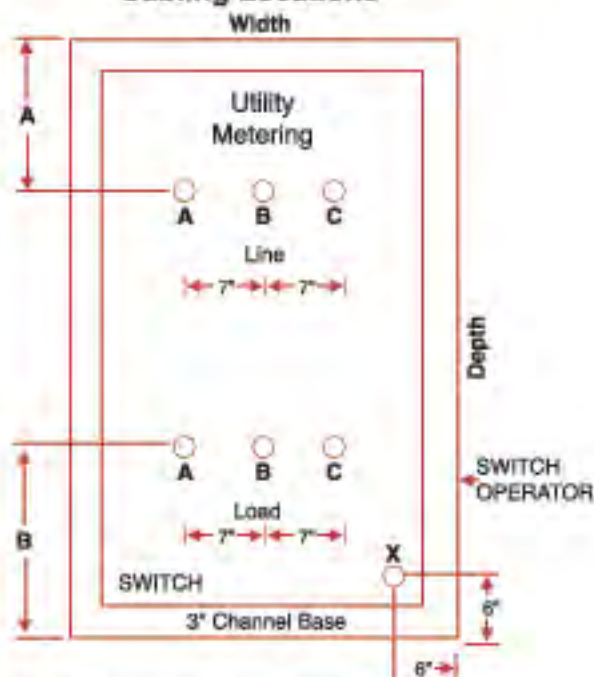
KV			Amperes, RMS				Mom. & Fault Close (ASYM KA)
Nom.	Max. Des.	BIL	Interrupting				
			Cont.	Load	Cap.	Meg.	
15	17	95	600	600	35	21	40
25	29	125	600	400	35	21	40

Physical Sizes & Park Numbers

Park No.	Voltage KV	Height	Depth	Width	A	B
PM 123-4.8	4.8	82"	60"	40"	19"	12"
PM 123-15	15	82"	60"	40"	19"	12"
PM 123-25	25	94"	80"	54"	19"	14"

To order specify current rating & fuse size.

Cabling Locations



A,B,C.- Approximate Cable Termination Points

X - Approximate Heating Cable Termination

NOTE: Front and rear clearance of 4' required—2' on right for handle operations



Switchgear

FEATURES & ADVANTAGES

- Welded steel construction for security and strength.
- Various combinations of switch and fuse arrangements available.
- Interrupter switches are factory adjusted.
- Built-in access control eliminates expensive fencing.
- No taping of bus connections.
- Folding switch handle stores in padlockable compartment on enclosure side.
- Sturdy 3 point lockable door latches.
- Heavy duty hinges.
- Louvers help reduce moisture.
- Manufactured to applicable utility standards.
- Hot dipped galvanized base.
- Finished with one prime and two enamel coats for corrosion resistance.



PM-255



PM-155

PM 155 & 255

Pad-mounted 15 & 25KV Switch & Fuse

All 155 and 255 units feature welded steel construction. Louvers at the top and bottom of each unit are rainproof and corrosion proof, maintain air circulation to keep interior dry. Three point cam-type, high-strength latches seal the doors shut. Lockable latches and screened louvers discourage tampering. Wide bulkhead doors provide easy access. Each full-length door has durable heavy-duty hinges with brass pivots. Foot operated holders lock the doors open, and

provide ample room for pulling cables and making terminations.

Interruptor switches are maintenance-free and rated at 600 amp. S&C® Power Fuses provide full-fault-spectrum protection. Switches are manually operated by removable switch handles. Bus connections are silverplated copper for long life.

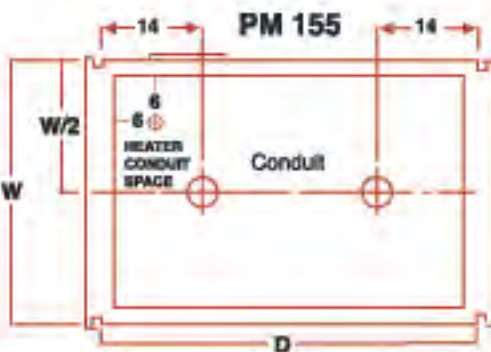
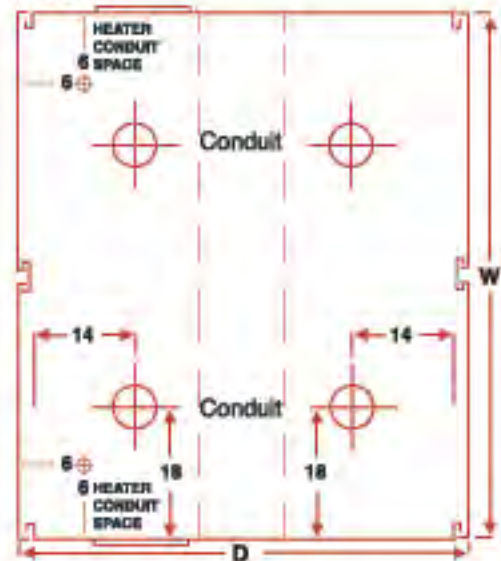
Call today and discuss your requirements with a Park sales representative.

SPECIFICATIONS

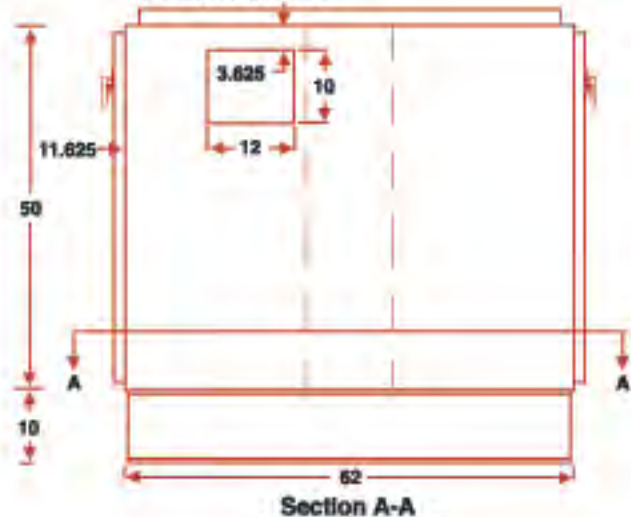
Park #	Volts	Height*	Width	Depth
155	15 kv	80	38	52
155	25 kv	85	40	62
255	15 kv	60	72	62
255	25 kv	65	82	72

*Height includes 10" base.

PM 255



PM 255 Side View





POWER DISTRIBUTION SYSTEMS

RELIABLE POWER DISTRIBUTION SYSTEMS FOR EVERY REQUIREMENT

- Busway
- Switchgear
- Switchboards
- Panelboards
- Transformer Enclosures
- Multiple Service Cabinets
- Standard & Custom Enclosures
- Control Panels

WWW.PARKDETROIT.COM
EMAIL: INFO@PARKDETROIT.COM
1-800-796-PARK